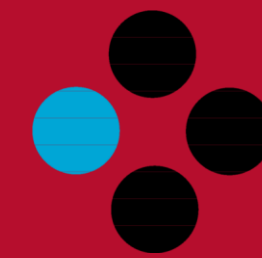


CHERRIES
RESPONSIBLE HEALTHCARE ECOSYSTEMS



ceeim

CENTRO EUROPEO DE
EMPRESAS E INNOVACIÓN
DE MURCIA

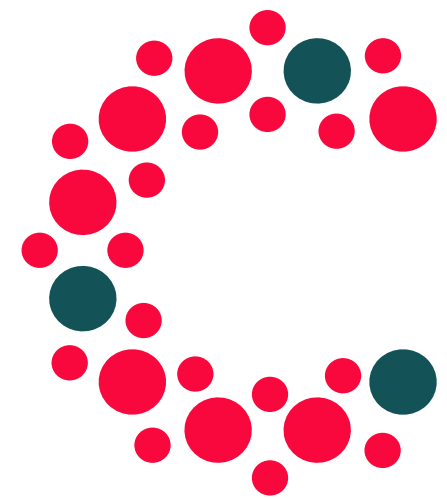
CHERRIES Project and PILOT MURCIA (ES)

*Accelerating Digital Transition in health North-East
Region of Romania*

9th of June, 2022



This project has received funding from the European Union's Horizon 2020 research and innovation programme under grant agreement nº 872873.
This document reflects only the author's view and the Commission is not responsible for any use that may be made of the information it contains



CHERRIES

RESPONSIBLE HEALTHCARE ECOSYSTEMS



The CHERRIES Model...

The CHERRIES project supports Responsible Research and Innovation (RRI) policy experiments in the healthcare sector in three European territories – in **Murcia** (ES), **Örebro** (SE) and the **Republic of Cyprus** (CY).

CHERRIES Partners

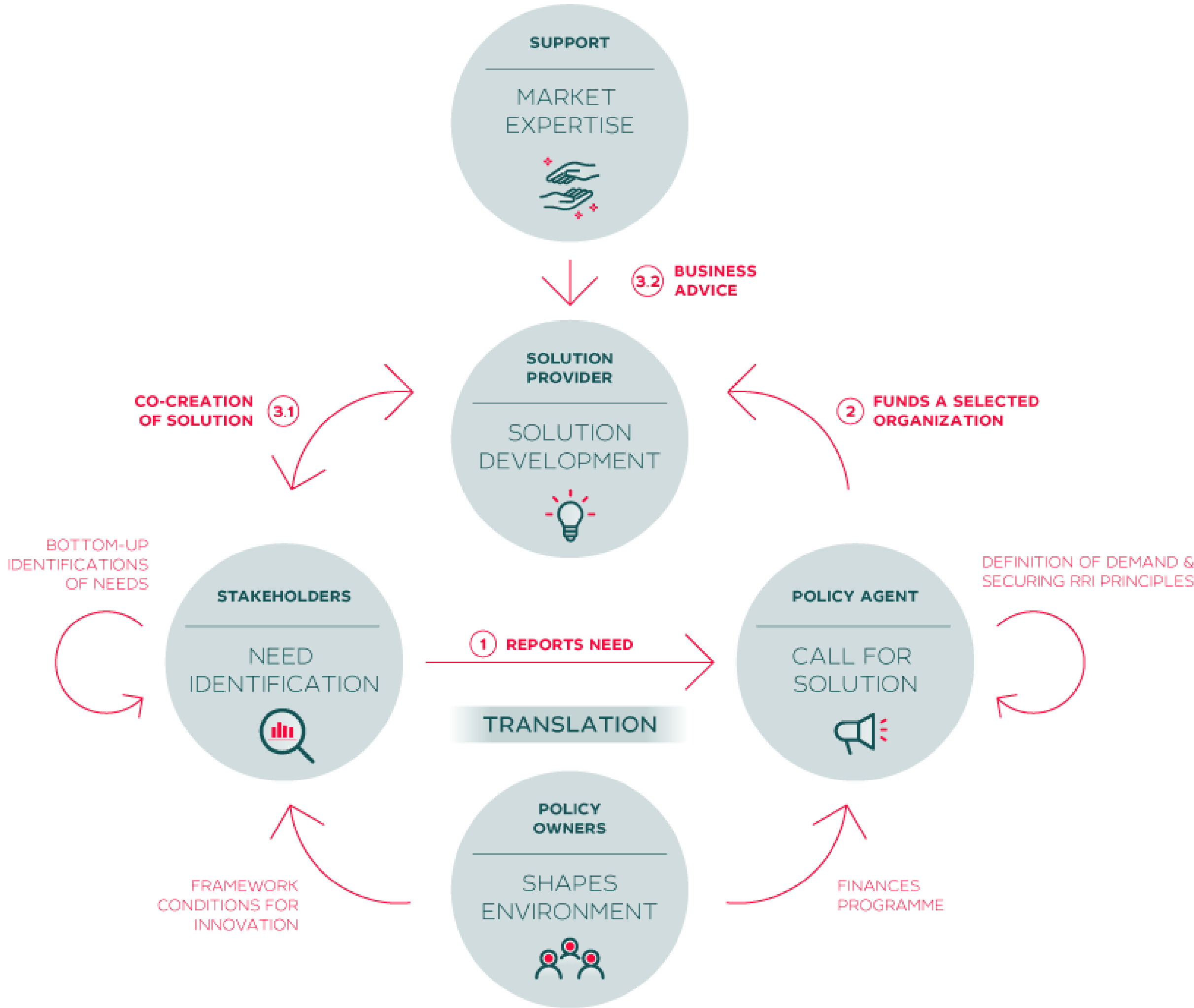


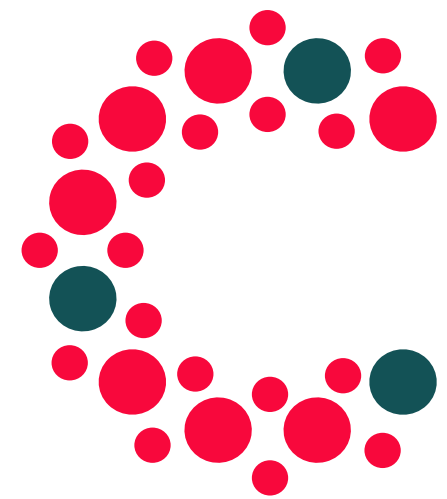
- **12 partners from 7 European countries**
- **Actors of innovation ecosystems, including research institutions, university, healthcare sector entities, Civil Society Organisation, territorial authorities, or business innovation centers.**

CHERRIES – the Model

- RRI experiments in healthcare sector based on **open-innovation** tackling the **sector's needs**
- **Co-creation approaches** for the development of innovative solutions
- **Sectoral R&I systems** are being analysed, the experiments are monitored and evaluated
- Replication of the methodology in 4 **mirror regions** such as Nord-East of Romania
- **Recommendation** for the design of a responsible and demand-oriented regional innovation policy mix

CHERRIES – the Model





CHERRIES

RESPONSIBLE HEALTHCARE ECOSYSTEMS



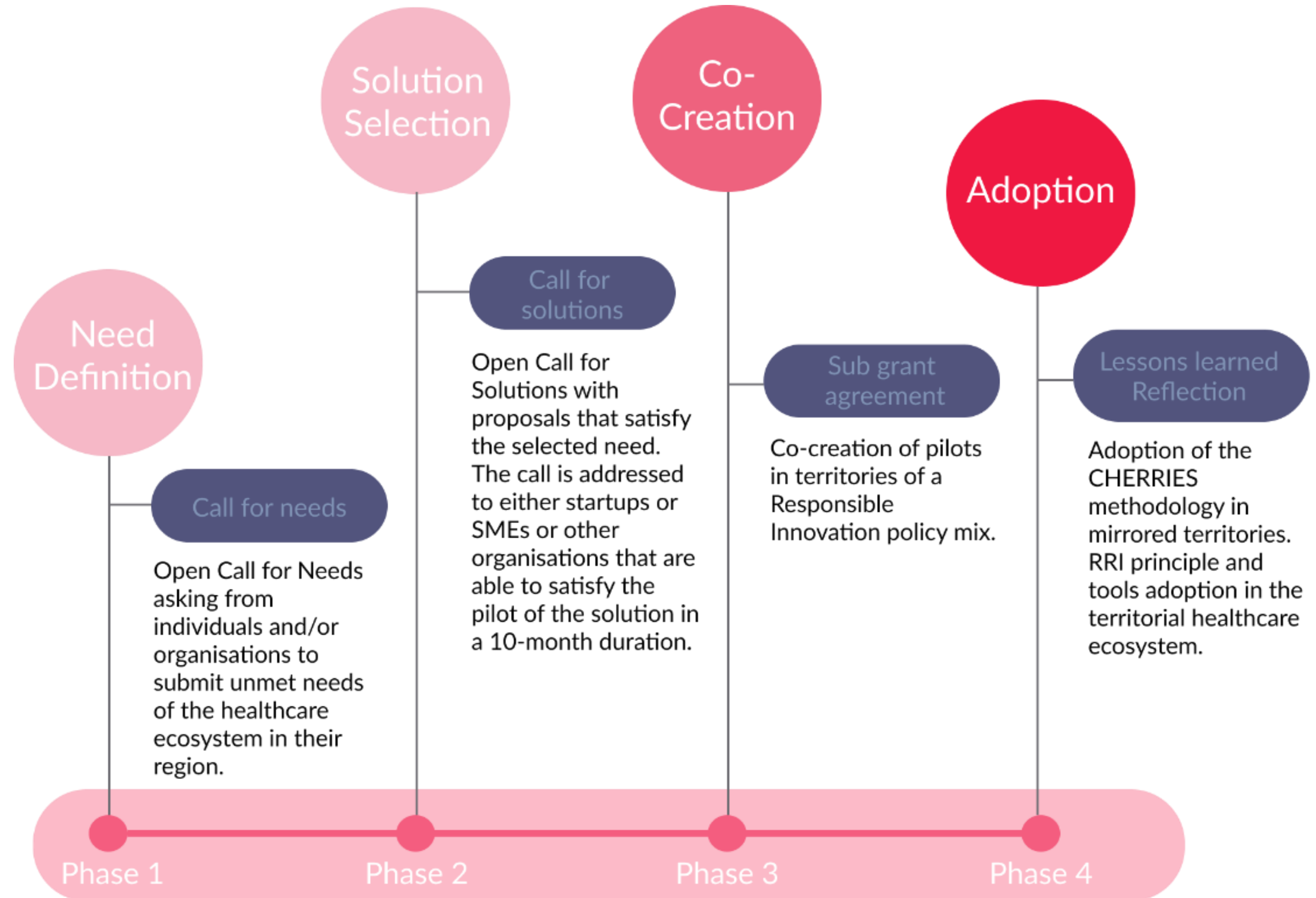
CHERRIES Pilot in Murcia (ES) ...

CHERRIES

Methodology

step-by-step

Pilot action to meet the demand of the territorial healthcare sector through co-created solutions with a focus on Responsible Research Innovation



Phase 1. Need collection and definition of challenge

Call for needs:

- Healthcare provider
- Patients' association
- Research group/universities



Phase 1. Need collection and definition of challenge

The **Challenge Proposer team** :

- ☐ Local association of **patients** of MS (EMACC)
- ☐ Department of **Neurology** (Hospital Santa Lucía of Cartagena)
- ☐ Department of **Biomedical Engineering** (Polytechnic University of Cartagena)

Phase 1. Need collection and definition of challenge

Multiple Sclerosis prevalence is **1 per 1000** inhabitants. **Main cause of neurological disability in young adults.**



NEEDS EXPRESSED BY PATIENTS WITH MULTIPLE SCLEROSIS

- **Frequent symptoms, often invisible**, that are not considered flares, but worsen autonomy and quality of life.
- In the periodic check-ups with the neurologist (every 3 or 6 months), we **forget to communicate or describe** them precisely.



NEEDS EXPRESSED BY NEUROLOGISTS

- Translate the symptoms expressed by patients into **measurable signs**.
- Detect their appearance quickly and determine if they indicate that a **silent worsening (disease progression)** is taking place so that you can act early.

Source: Pulso Ediciones

Need to shorten the delay of detection of MS progression.

Phase 1. Need collection and definition of challenge

Need converted into Challenge PROGRESS

Development and validation of a solution for the collection, analysis and monitoring of the **daily activity** of patients with Multiple Sclerosis to achieve the **early detection of the progression in Multiple Sclerosis (MS)** applying sensors to 30 patients during 5 months using the Internet of Things (**IoT**) beyond the **current face to face consultations** with neurologists and nurses.

Phase 2. Selection of the Solution



CHERRIES

RESPONSIBLE HEALTHCARE ECOSYSTEMS



Call for solutions

  CHERRIES Murcia | Open Call for Solutions

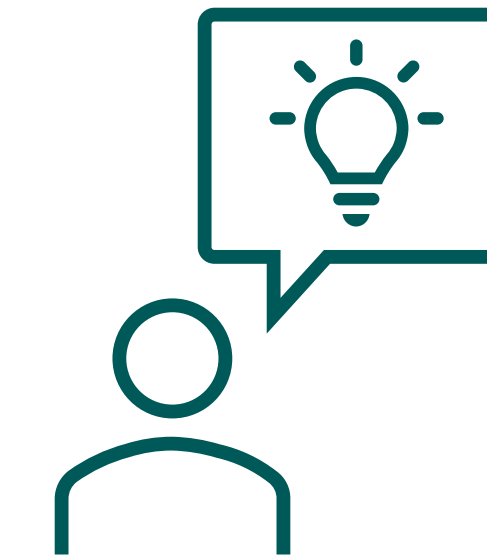
Early detection of progression in
Multiple Sclerosis

Submit your solution by 15 April 2021

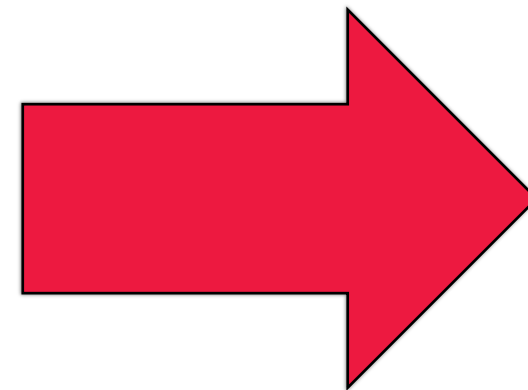
 This project has received funding from the European Union's Horizon 2020 research and innovation programme under GA no 872873.

 **CHERRIES**
RESPONSIBLE HEALTHCARE ECOSYSTEMS

Phase 2. Selection of the Solution



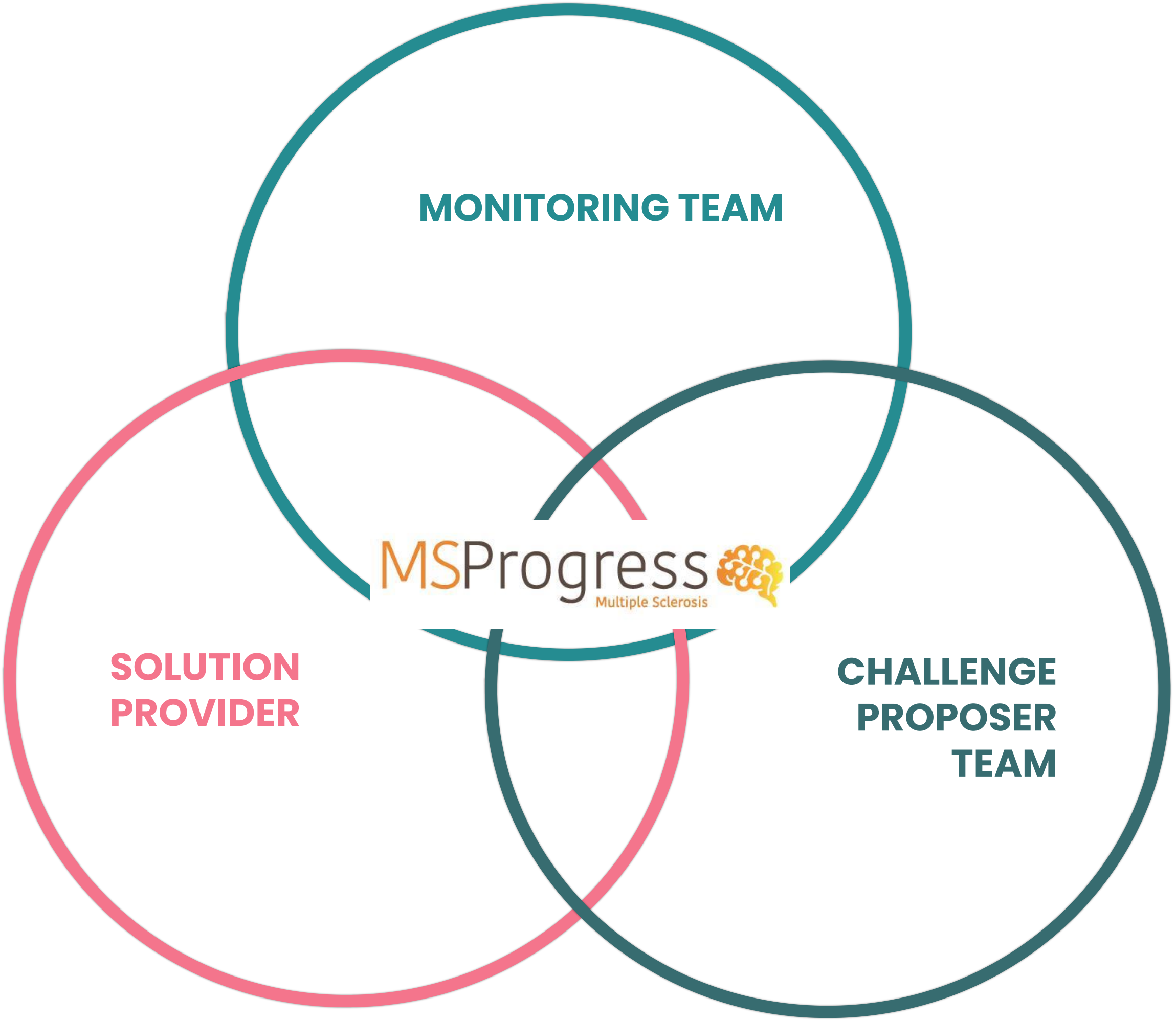
Challenge
PROGRESS



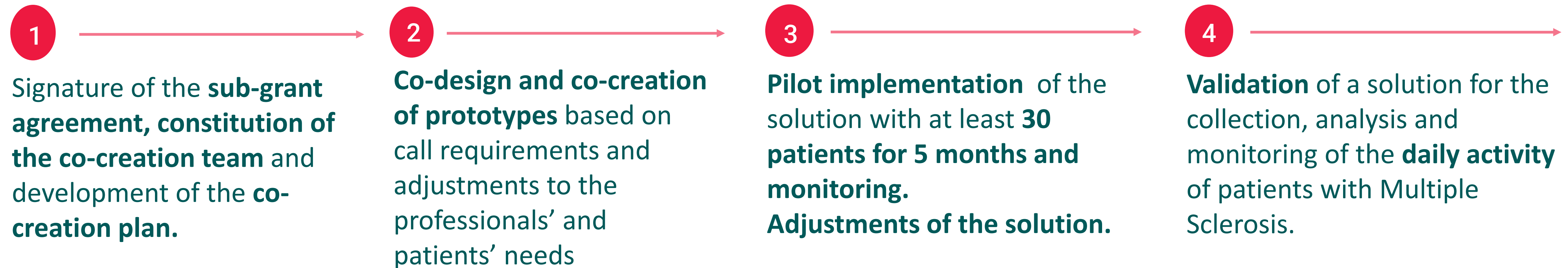
MSProgress 
Multiple Sclerosis

Technological solution: ICT e-health Platform
and kinetic algorithm to detect the progression
of the Multiple Sclerosis

Phase 3. Co-creation of the innovative solution MSProgress

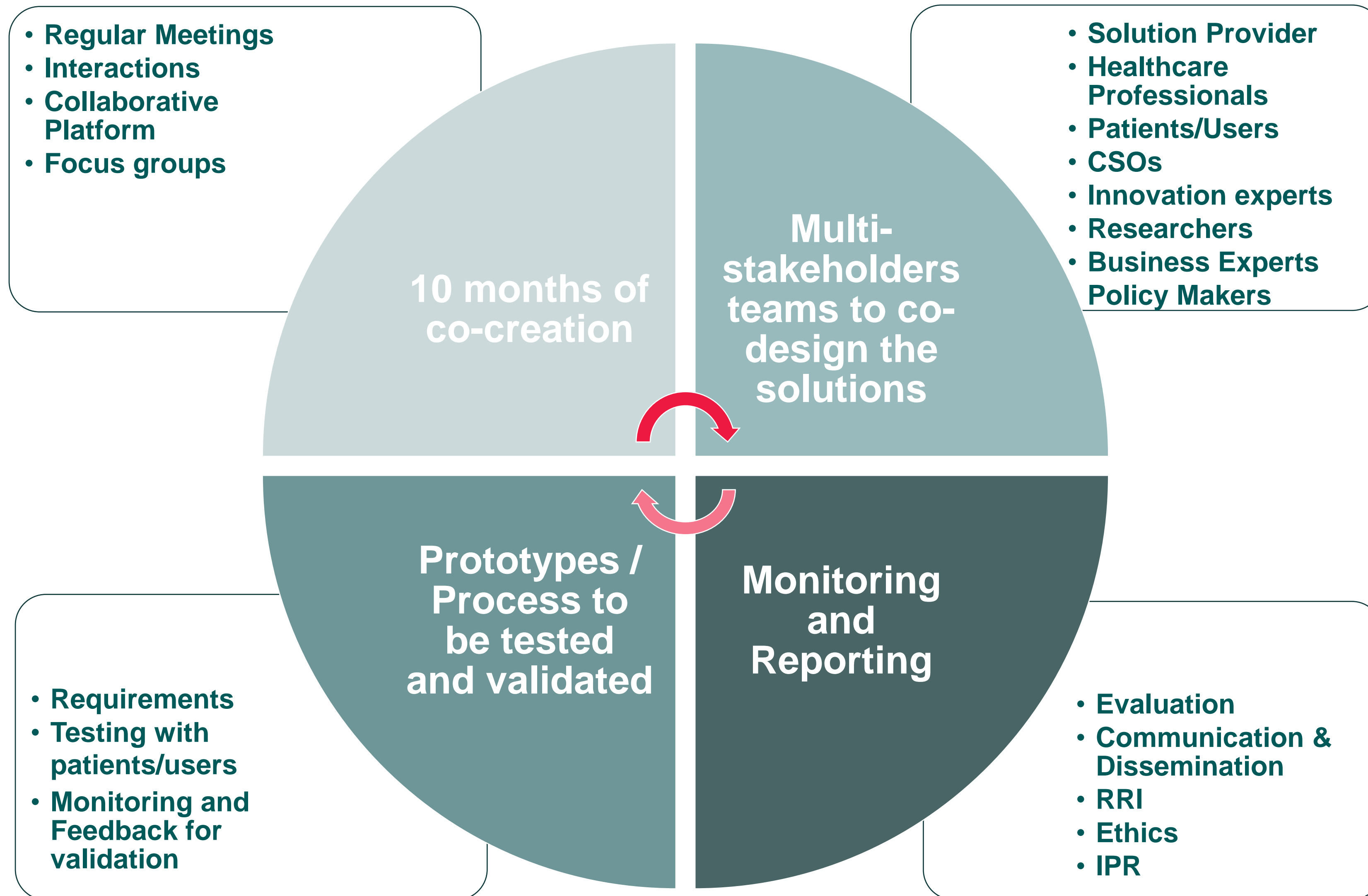


Phase 3. Co-creation of the innovative solution MSProgress



CHERRIES Co-Creation Monitoring

Phase 3. Co-creation of the innovative solution



Demand-driven Co-Creation process insights

- **Stakeholders engagement**
 - Promotion of **societal interest in a need** and encouragement of **the citizens to be part of a solution**
 - **Identification, Engagement and Involvement of the stakeholders and end-users** from the needs' identification stage and along the co-creation process
 - **Benefits** of the co-creation and RRI for innovation processes
 - Information about the **potential difficulties and opportunities**

Demand-driven Co-Creation process insights

■ Co-Creation environment

- Promotion of a co-creation environment: **Respect, Dialogue, Confidence**
- **Communication and facilitation:** set up clear channels of communication, and coordination modalities adapted to the specificities of the participants
- Considering the different **expectations** of the involved participants/organizations about the experience, their role, their involvement but also the results especially when it comes to innovative solutions
- **Adjust to the need, local context and stakeholders, learning by-doing process** with lessons learnt and recommendations
- Co-creation **Continuous monitoring** of the process
- **Assessment** of both the impact of the process and the solution
- **Work towards the sustainability of the solution** beyond the project and funding

Demand-driven Co-Creation process insights

- **Investment** in innovation and promotion of demand-driven healthcare services
- **Combination of societal unmet needs with regional R&I priorities**
- **Benefits** of working in co-creation from the beginning of the innovation process to ensure the deployment of valid solutions and their future acceptance and use
- **Engagement and Involvement** of stakeholders in the definition, conception and establishment of innovative solutions

CHERRIES Partners



Contact

Laure Raso – CEEIM

laure.raso@ceeim.es

CHERRIES Project

<https://www.cherries2020.eu/>

LinkedIn: [cherries_eu](#)

Twitter: [@CHERRIES_eu](#)



CHERRIES
RESPONSIBLE HEALTHCARE ECOSYSTEMS



This project has received funding from the European Union's Horizon 2020 research and innovation programme under grant agreement n° 872873.
This document reflects only the author's view and the Commission is not responsible for any use that may be made of the information it contains